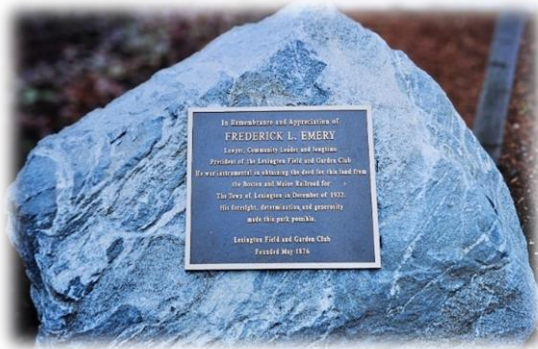


# Emery Park

Frederick L. Emery a 36-year-old patent attorney, assumed the presidency of the Lexington Field & Garden Club in 1904-1917 (This man was dedicated. He also was president in 1918-1928 and 1930-1933). During his tenure, Emery began to petition the railroad to sell the land to the town. By late 1921, Boston & Maine Railroad agreed to sell the railroad depot area to the town for \$30,000.

In 1922, the area became known as Depot Square, but after Emery's death, it was renamed in his honor. In his will he left \$5,000 to the town with the income from the bequest to be spent by the garden club to beautify his Lexington. To this day you will see volunteers from the garden club working every Monday beautifying Emery Park. \*

For many years, Christina Gamota worked tirelessly with volunteers from the garden club at Emery Park. Now, the steward of Emery Park is Chris Kochanski.



A plaque now resides in Emery Park dedicated to Frederick L. Emery.

The inscription on the plaque reads:

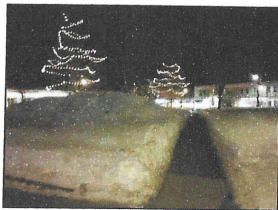
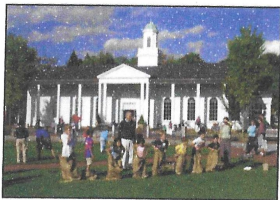
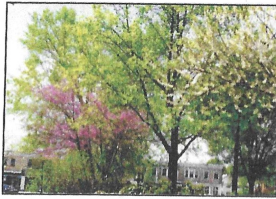
*“In remembrance and appreciation of Frederick L. Emery, lawyer, community leader, and longtime president of the Lexington Field and Garden Club. He was instrumental in obtaining the deed for this land from the Boston & Maine Railroad for the*

*Town of Lexington in December 1922. His foresight, determination, and generosity made this park possible.”*

*\*Excerpt from Ashley Rooney's article in The Lexington Colonial Times August 2017.*

*Photos courtesy of Regina Sutton.*

## FOUR SEASONS AT EMERY



## LEXINGTON FIELD & GARDEN CLUB

Founded in 1876, the LFGC currently has over 300 members. In addition to the main club, we have several sub-groups. We offer many educational, social, and community improvement opportunities. Members can learn about a wide range of gardening-related topics through lectures, workshops, field trips, and projects focused on horticulture, landscaping, and floral design. Many members also participate in maintaining public gardens around town. Our meetings are open to the public, so please come and bring a friend!

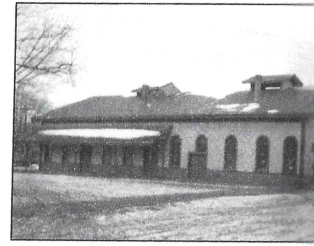


*More information about our activities and membership can be found at [www.LexGardenClub.org](http://www.LexGardenClub.org)*

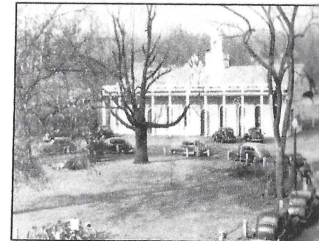
LEXINGTON FIELD & GARDEN CLUB  
P.O. Box 133  
Lexington, MA 02420

## EMERY PARK

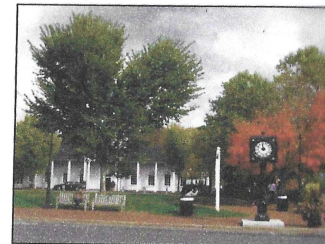
LEXINGTON



Early 1900s



1936



2014

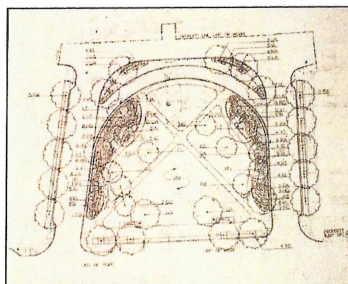
## THE MINI ARBORETUM: A HISTORY OF EMERY PARK

Centered in the middle of Lexington sits a bright green oasis known as Emery Park named after Frederick L. Emery, a prominent town leader and one of the founders of the Lexington Field & Garden Club (LFGC). Fulfilling his legacy, LFGC still cares for the plants and trees that we enjoy there on a daily basis.

Emery Park was the land in front of the depot station owned by the Boston & Maine Railroad. In 1873, the railroad extended its service from Boston to Lexington and Concord. By 1886, double tracks going between Boston and Lexington were opened and eventually provided train service 22 times a day, each way.

Unfortunately, all those trains led to an unattractive jumble of railroad ties, coal bins, and piles of wood in the heart of Lexington. In the late nineteenth century, Frederick Emery and other public-spirited residents decided to improve the area and beautify the site. The work of this group led to the beginning of the LFGC in 1876, which makes it the oldest garden club in the United States.

By the early 1900s, conditions in the adjoining areas had deteriorated with, as noted by the Lexington *Minuteman*, "the killing of trees and shrubs and the blight of advertising boards." The Club worked to transform the untidy railroad center in the heart of the town.



Emery Park design, 2000

Emery, a lawyer and three-time president of the garden club, began to petition the railroad to sell the land to the town. By late 1921, Boston & Maine agreed to sell the land for \$20,000. In 1922, the area became known as Depot Square, but after Emery's death, it was renamed in his honor. In his will, Emery left \$5,000 to the town - a healthy amount in those days. LFGC was to manage the interest and continue to beautify his beloved town.

"The Club's most important contribution [to Lexington] is Emery Park".

*Edmund C. Grant  
past President,  
Lexington Historical Society  
Lexington Minuteman  
August 9, 2001*

The park was redesigned in early fall 2001. The Club suggested native species that could withstand pollution and bloom from April to October. Forty-three granite posts, which originally came from the Munroe cemetery, were refurbished.

When it was completed, Christina Gamota and a small group of Club members took over its maintenance. They can be seen throughout the year, weeding, cleaning, pruning, and watering. They encourage people to join them either working in the park or enjoying the beauty of this mini-arboretum in the center of town.

~ E. Ashley Rooney, LFGC President  
(2017-2019)

